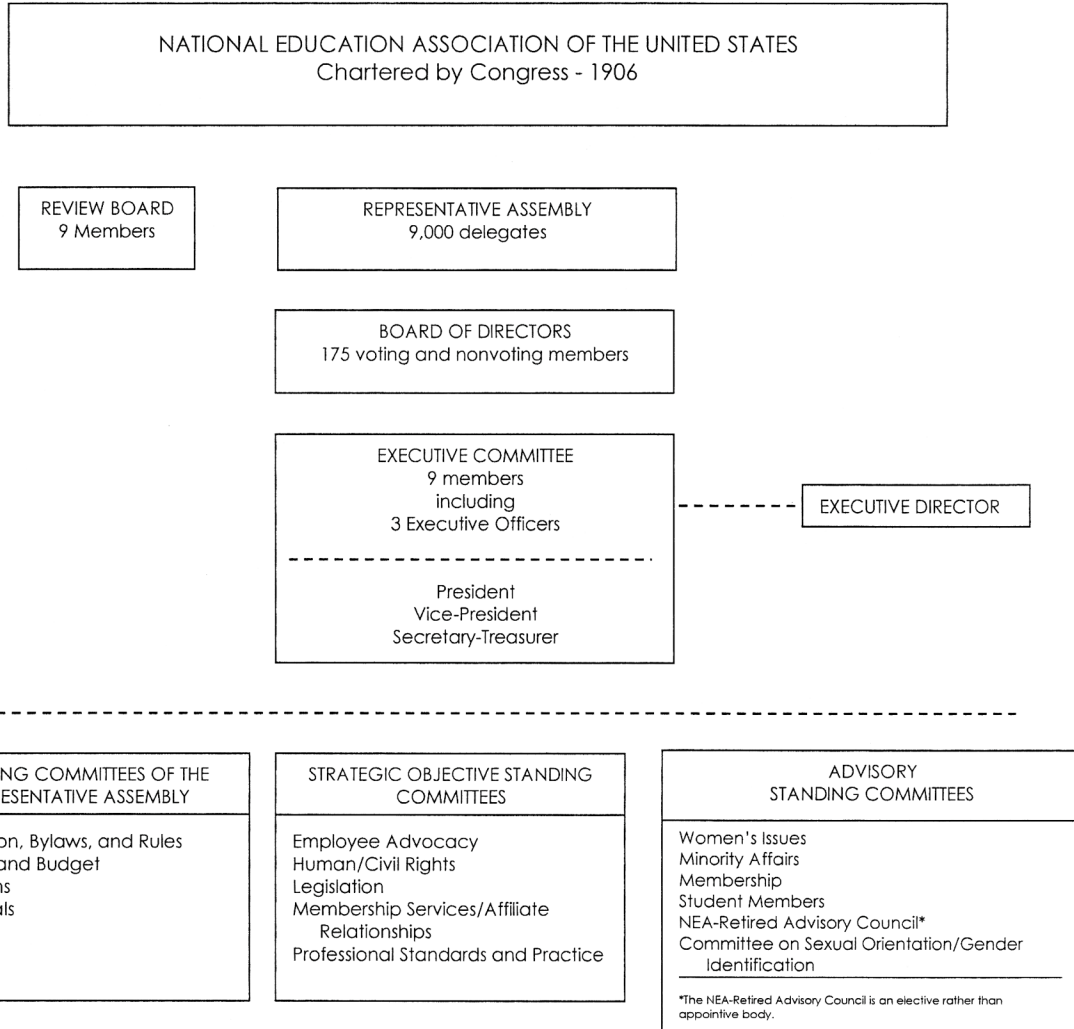




NEA STRUCTURE



Note: This chart does not include ad hoc internal committees of the Board of Directors and Executive Committees.

1. Major policies of the National Education Association are determined annually at the early-summer meeting of the Representative Assembly.
2. Within the guidelines voted upon by the Representative Assembly, the 171-member NEA Board of Directors determines the program of the Association. The Board of Directors meets five times each year. Members of the Board from California are elected by the State Council. Representation for each state is determined by the number of UEP members within the state.
3. The nine members of the NEA Executive Committee are elected by the Representative Assembly. The Executive Committee holds eight regular meetings each year to carry out the business of the Association—and may hold special meetings as needed.